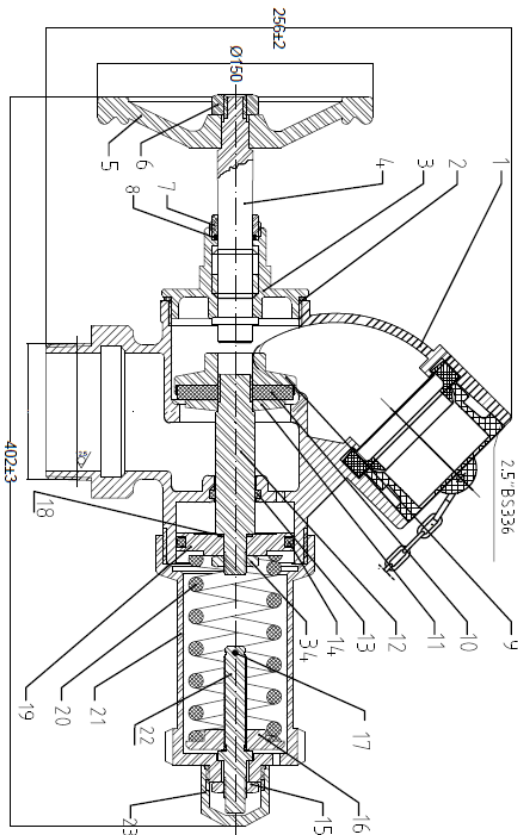




Our Landing Valve series are manufactured in accordance to BS 5041-1, they are typically installed in wet/dry riser systems in high-rise buildings.

Mounted along stairways or service shafts, this valve enables fire services to quickly connect hoses to a pressurized water source at different floors.

Made of Gunmetal (LG2), supplied with Instantaneous Female outlet (BS 336) and blank cap



## Technical Data

Model	A1-PRV-01
Body Material	Gunmetal (LG2)
Valve Type	Bid-Nose, Globe Pattern
Inlet Connection	Threaded 2.5" BSPT Male
Outlet Connection	2.5" Instantaneous BS 336
Test Pressure	≥ 30 BAR @ 2 MINS
Flow Rate	≥ 8.5 LPS @ 4.7-20 BAR
Standards	BS 5041-1 (1987)
Blank Cap	Plastic with S/S Chain
Weight	9.2kg

## Download Approvals & Datasheets

