

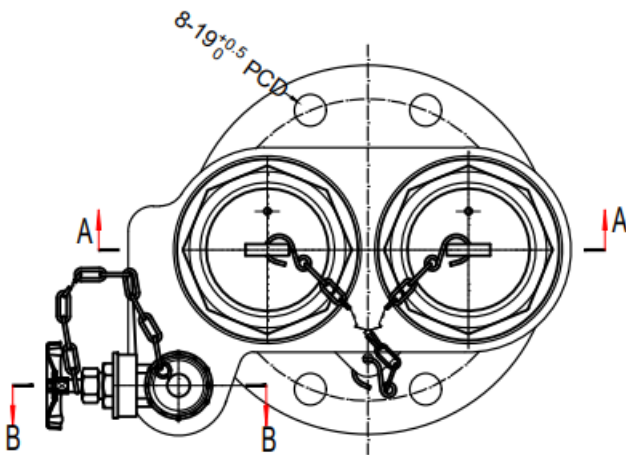
Our Breeching Inlet series are manufactured in accordance to BS 5041-3. They are typically installed at ground level, enabling rapid water delivery to upper floor landing valves.

Supplied with instantaneous inlets, blank caps and non-return valves.



Technical Data

Model	A1-2W-01
Body Material	Cast Iron
Valve Type	Oblique, Globe Pattern
Inlet Connection	2 x 2.5" Instantaneous BS 336
Outlet Connection	Flanged BS 4504-2
Test Pressure	20 BAR
Working Pressure	10 BAR
Standards	BS 5041-3 (1975)
Blank Cap	Rubber with S/S Chain
Weight	13.6kg



Download Approvals & Datasheets

